


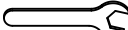
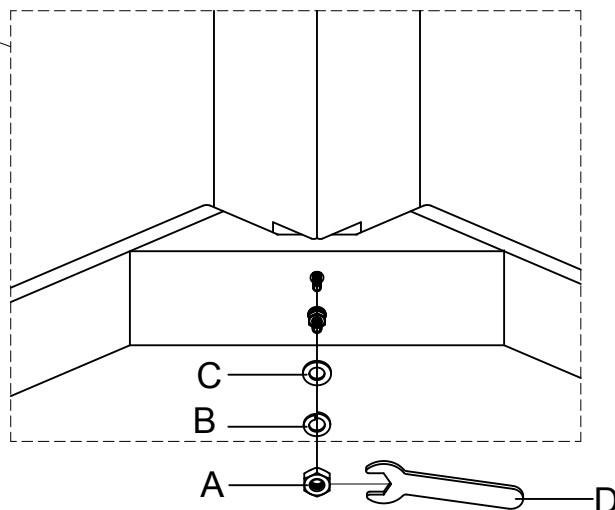
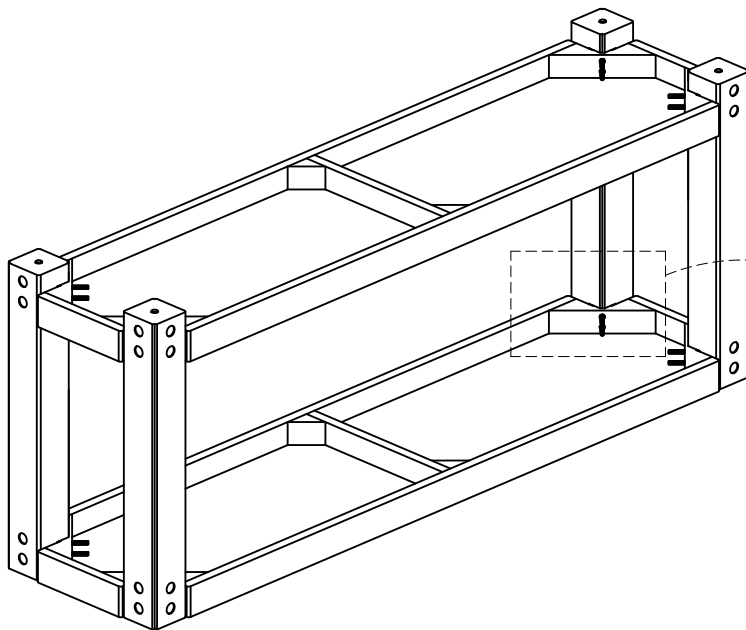
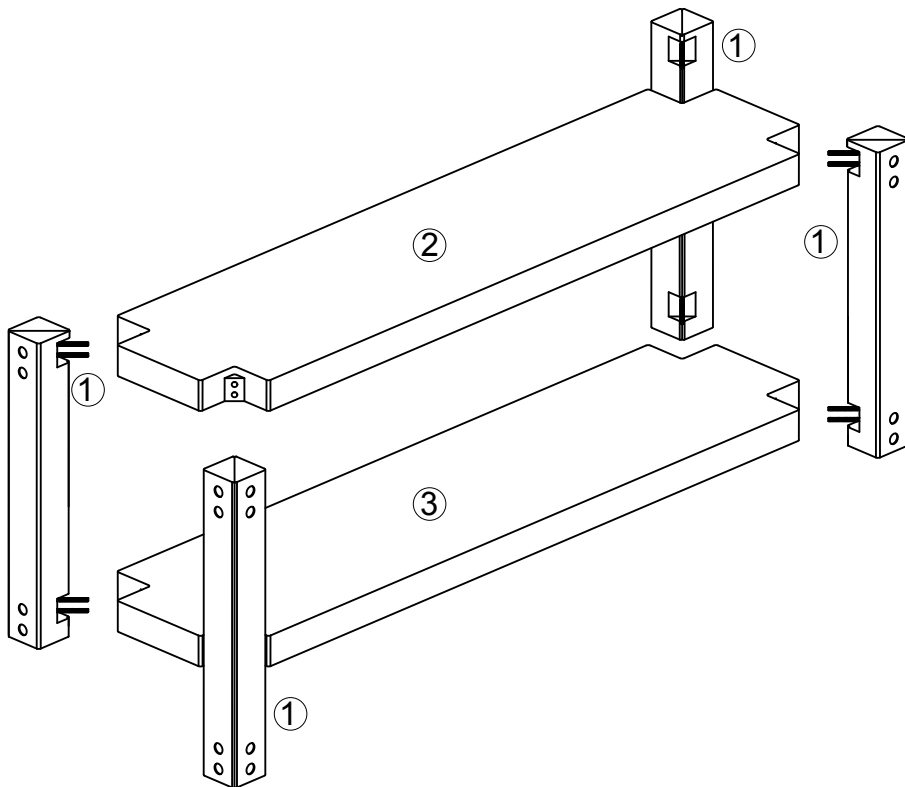
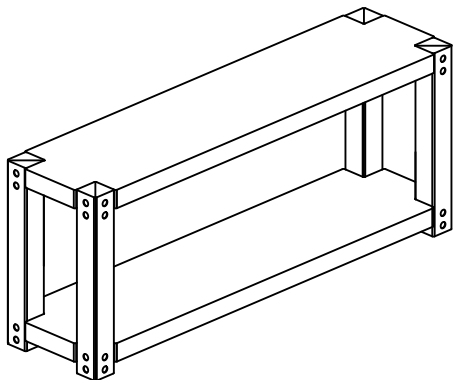


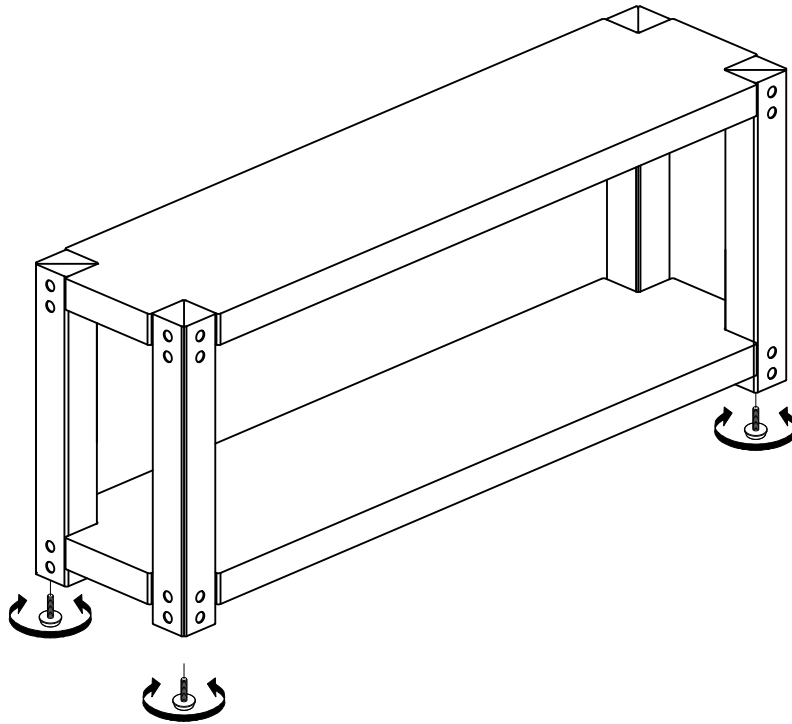
**ASSEMBLY INSTRUCTION FOR**  
**MODEL: EMMER CONSOLE TABLE**

**HARDWARE LIST**

A		Nut	Ø5/16" x 8mm	16
B		Lock Washer	Ø5/16"	16
C		Flat Washer	Ø5/16" x 19mm	16
D		Hexagonal Wrench	14mm	1



## ASSEMBLY INSTRUCTION FOR MODEL: EMMER CONSOLE TABLE



Adjustable Leveler

### Adjusting Floor Levelers

Your furniture has been expertly crafted and pre-adjusted by professionals. However, slight shifts can occur during transportation. If you notice that the doors are not perfectly aligned or the furniture wobbles, a quick adjustment can help ensure stability and a seamless look.

#### Adjust the Floor Levelers

**Check for Stability** - Place the furniture in its final position on a level surface. If it wobbles or doesn't sit evenly, the floor levelers need adjusting.

**Locate the Levelers** - These are small adjustable feet found at the bottom corners of your furniture.

**Adjust as Needed** - Using your hand or a wrench, turn the levelers clockwise to raise or counterclockwise to lower the furniture. Make small adjustments and check stability after each turn.